

Up-front pricing and the only completion date guarantee in the remodeling industry.

MAKEOVERS



\$5,951.70

- A makeover involves leaving the existing tub and bathroom floor in place and does not involve gutting the space to the studs
- Sterling Sacramento 21" pedestal sink
- Price Pfister Avalon 4" centerset chrome faucet
- Sterling Accord bathtub with fiberglass surround in white
- Sterling Windham toilet and seat
- Price Pfister Avalon showerhead/diverter/pressure balancing valve
- Bellacor Forte 3-Light bath fixture mounted above medicine cabinet
- Medicine cabinet in white with mirror
- Gatco Charlotte series bathroom accessories
- Prime and paint walls and enamel one side of door and casing for door and window.

MODERATE



\$9,953.43

- Sterling Sacramento 21" pedestal sink
- Price Pfister Avalon 4" centerset polished chrome faucet
- Sterling Accord bathtub with fiberglass surround in white
- Sterling Windham toilet and seat
- Price Pfister Avalon showerhead/diverter/pressure balancing valve
- Bellacor Forte 3-Light bath fixture mounted above medicine cabinet
- Medicine cabinet in white with mirror
- Gatco Charlotte series bathroom accessories
- Enamel one side of existing bathroom door, window, and millwork
- New 3.25" stock baseboard trim, window and door casing
- Mannington Adura luxury vinyl tile floor

CLASSIC



\$14,184.23

- Kohler Memoirs 24" pedestal sink
- Kohler Archer widespread polished chrome faucet
- Kohler Villager cast iron tub in white
- Kohler Archer showerhead/diverter/pressure balancing valve
- Kohler Cimarron comfort height toilet & Kohler Cachet seat
- Rejuvenation Kent light sconces mounted on each side of medicine cabinet
- Custom medicine cabinet with mirror in white
- Gatco Franciscan bathroom accessories
- Enamel one side of existing bathroom door
- New enameled 4" baseboard trim, window and door casing
- American Olean hexagon mosaic tile floor in black/white
- American Olean 3"x6" subway tile tub/shower surround in white

CUSTOM



\$15-30,000

- New wood double hung window
- New 1-panel flat pre-hung door, 3 piece baseboard trim, and 4" wide trim w/ backband on window & door
- New dual flush low-flow toilet
- New walk-in tile shower
- New showerhead & pressure balancing handle
- Cast iron bathtub, pressure balancing faucet for bathtub, under mount bathroom sink, sink faucet
- Curved shower curtain rod, towel bar, towel ring, robe hook, and mirror
- Recycled content floor tile
- Exterior walls insulated
- w/formaldehyde-free insulation
- Walls & ceiling sheetrocked
- w/recycled content sheetrock
- Bathroom lighting allowance \$400
- New medicine cabinet
- Eco Friendly vanity cabinet - Vanity cabinet painted or enamel finish. (As low VOC as possible)
- Quartz natural stone countertops
- All painting and staining done with low or no VOC finish

*** All bathroom remodels are the interior of an existing space, approximately 5'x7' with the necessary permits, plumbing, electrical, insulation, sheetrock, millwork, accessories, flooring, painting, and clean-up and debris removal to meet residential building codes. Pictures above are used as approximate guides to show a close representation of each project type. Restrictions apply. Final pricing can not be determined without a visit to your home and will be based on your homes conditions.*

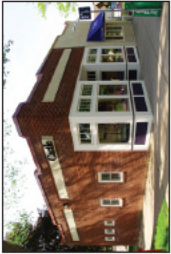
Specializing in remodeling older urban homes for over 30 years.

Castle Building & Remodeling
The best value in professional remodeling

www.castlebri.com
612-789-8509

Visit online or schedule a visit to one of our showrooms!
Free Design Consultation – Open Saturdays 10am-3pm & 5pm – 8pm Wednesdays or by Appointment.

CUT OUT - SAVE THE DATE!



Minneapolis

2600 Johnson St. NE
Minneapolis, MN 55418

Hours:
M,T,Th,F: 9am-6pm
Wednesday: 9am-8pm
Saturday: 10am-3pm
Sunday: Closed

You are invited to learn how to make the most of your home!

2011 Educational Remodeling Series

Our monthly education classes are held from 5:30 to 7:00 pm. The classes focus on how to plan a remodeling project. Typical project budgets and timelines will be discussed, design tips will be shared, and we will go through before and after pictures. Our design showroom will be open to allow you to see many options for materials. You are encouraged to bring photos and measurements of your space. These classes are not a sales pitch, but are designed to be informative and educational.

January	18th	Planning Your Kitchen Remodel
February	15th	Planning Your Basement Remodel
March	15th	Planning Your Bath Remodel
April	19th	Planning Your Kitchen Remodel
May	17th	Planning Your 1/2 Story Remodel
June	21st	Planning Your Bath Remodel
July	19th	Planning Your Kitchen Remodel
August	16th	Planning Your Basement Remodel
September	20th	Planning Your Bath Remodel
October	18th	Planning Your Kitchen Remodel
November	15th	Planning Your 1/2 Story Remodel
December	20th	Planning Your Bath Remodel

Delicious pizza and appetizers are provided by Pizza Luce. Space is limited to 12 people. Costs for the classes are \$15 per person. **All attendees will receive a \$64.00 gift certificate good towards either an in-home design consultation or one hour of handyman services.** To guarantee a spot in one of our classes, payment must be made at least one week in advance of the class. If you would like to attend one of our classes, please RSVP as soon as possible on our website at www.castlebri.com/class-schedule.html or call 612-789-8509 x0.

Castle Design Selection Studios

- No driving around town to multiple showrooms
- On staff interior designers to guide you through selections
- See our superior craftsmanship first hand before buying
- Monthly education classes (see attached schedule!)
- Control of timing and quality
- Lower cost because we buy factory direct
- Quicker turn around time



Planning with our interior designer on-site allows you to see actual product samples.

FREE Bathroom Design!
Schedule a time to meet with a bathroom designer in our unique showroom!



Castle Handymen Services

Do you have a small project that is too complex for you to do yourself? Castle will help you finish up all those hard-to-finish projects.

- Bathroom Installations / Repairs
- Basement Beams & Posts
- Countertops
- Porch or Deck Installations / Repairs
- Fascia / Soffit Repairs
- Kitchen Installations / Repairs
- Structural Framing
- Molding & Trim
- Siding
- Windows
- Wood Repair / Wood Rot
- And Much, Much MORE!