



December 2018

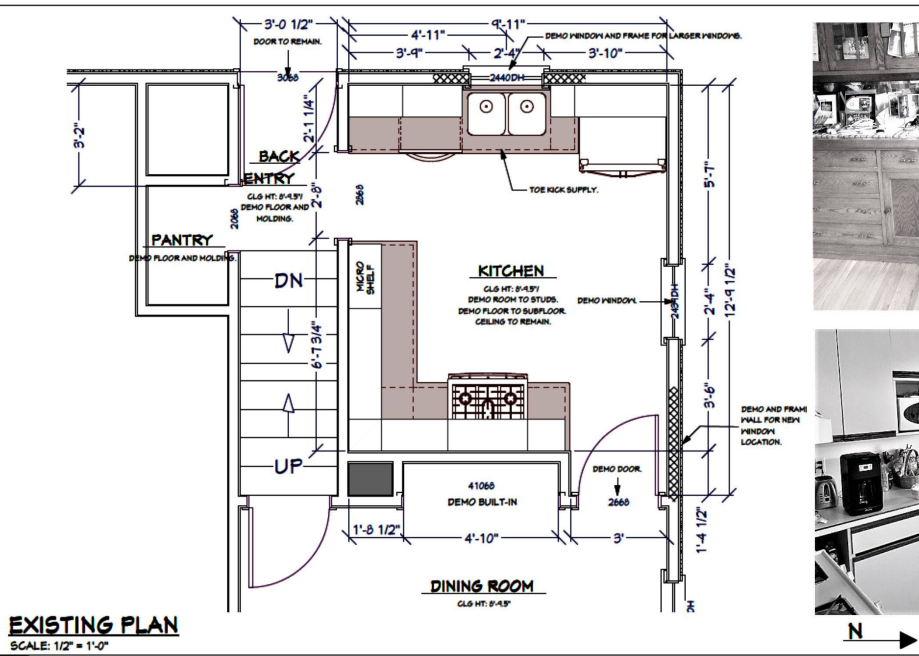
PROJECT FEATURE: South Minneapolis Traditional Kitchen Remodel with Solatubes



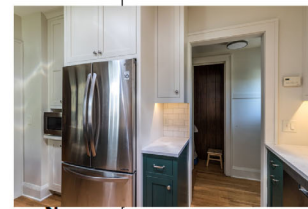
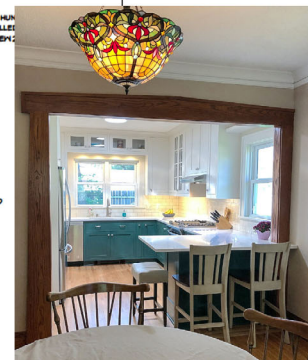
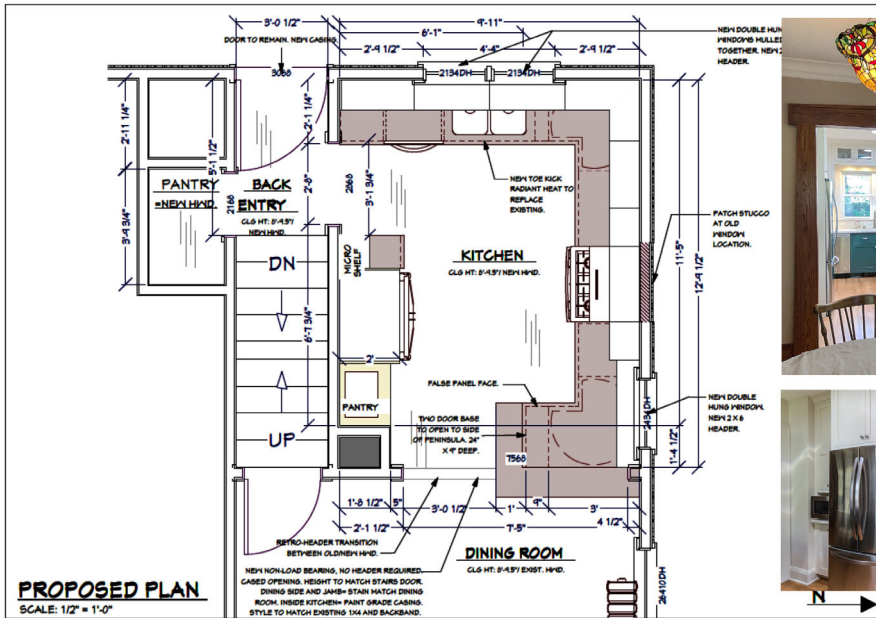
A great example of the difference Solatubes make is this beautiful bungalow kitchen remodel in the Northrop neighborhood of South Minneapolis. These homeowners contacted Castle planning for a whole kitchen renovation, which included opening the existing kitchen into the dining room so the family could enjoy a more multi-purpose space.

The homeowners did not want a boring kitchen so we focused on matching the original style/feel of the home but rejuvenated the space. A fresh traditional kitchen design was planned to provide better function for the family's needs and also a beautiful style to the heart of their home.

**B
e
f
o
r
e**



**A
f
t
e
r**



The original (1927) built-in buffet cabinet between the kitchen and dining was re-homed to a vintage salvage room in Minneapolis for a new future life. New hardwood floors carry into the kitchen to match the existing hardwoods. New custom-built flush-inset cabinetry was designed with a wonderful two-tone color scheme. The new cabinetry includes custom storage, glass uppers and accessories; silverware tray divides, trash pull-out, outlet docking drawer for phones to charge, custom shelf roll-outs and lazy susan corners.



Castle selected historic paint colors by Benjamin Moore to keep within the period of the home. The base cabinets are painted in Benjamin Moore, Tarrytown green and the uppers in a soft white (BM, Ballet white). By doing two cabinetry colors, Castle was able to create some unique interest and anchor the base cabinets to the floor while still having light walls with the white cabinetry.

New marble patterned [Cambria](#) Quartz countertops were selected in the luxurious and classic Torquay design. To complete the walls, traditional white subway tile was installed.



Along with the beautiful finishes, we also improved light quality in the space. New windows were installed increasing from two windows to three windows with an additional window to the backyard. We also installed two [Solatubes](#) for additional natural lighting. The Solatubes include a solar-powered night light and additional light kit for night time use.

Overall, the new traditional kitchen is much like a spring day – light, airy and inviting!



Designed by: [Emily Blonigen](#)

EDUCATION FEATURE: Solatubes

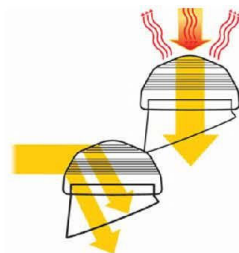
Spectralight® Infinity Tubing Transfers Light Through the System

Captured light moves through tubing made of the world's most reflective material, maintaining incredible brightness, even around corners.



How do Solatubes work?

by Solar Midwest

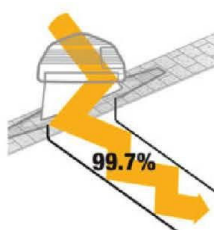


1. CAPTURE

Raybender® 3000 Technology

A patented daylight-capturing dome lens that:

- Redirects low-angle sunlight for maximum light capture
- Rejects overpowering summer midday sunlight
- Provides consistent daylight throughout the day



2. TRANSFER

Spectralight™ Infinity Tubing

Tubing made of the world's most reflective material that:

- Delivers 99.7% specular reflectivity for maximum sunlight transfer
- Provides the purest color rendition possible so colors are truer, brighter
- Allows for run lengths up to 30 feet to deliver sunlight to lower floors



3. DELIVER

Optical Diffusion and Control

- Diffusers and fixtures designed to minimize glare and improve visual comfort
- Optional Daylight Dimmer features patented butterfly baffle design

Solatubes can go almost anywhere

The compact and flexible design of TDDs allow them to be installed in just about any room, including rooms without direct roof access and smaller spaces where daylighting would usually not be an option.

Installing a Solatube is fast, clean and easy

They require no structural reframing, tunneling, drywalling or painting. A professional can install the product in less than two hours.

Solatubes are actually good for you

All of the incredible benefits of daylighting have only recently come to light. It has been shown in several prominent studies that increasing daily exposure to natural light can enhance mental and physical well-being, boost concentration and energy levels and a variety of other unexpected perks.

Solatubes are cost-effective

The cost of a Solatube is considerably less than other daylighting options, such as windows and skylights, including both product and installation costs.

SOLARMidwest Inc.



Upcoming Educational Classes:

Northeast Location (2600 Johnson St. NE, Minneapolis, MN 55418):



- January 22nd, 2019 - 6PM - Planning a Bathroom Remodel
- March 12th, 2019 - 6PM - Materials & Finishes 101
- April 2nd, 2019 - 6PM - Planning a 1/2 Story (Attic) Remodel
- May 21st, 2019 - 6PM - Effectively Financing Your Remodel

St. Paul Location (362 Snelling Ave S., St. Paul, MN 55105):



- January 29th, 2019 - 6PM - Effectively Financing Your Remodel
- March 5th, 2019 - 6PM - Evaluating Your Home for Solar
- May 7th, 2019 - 6PM - Planning a Bathroom Remodel

South Mpls Location (5 W Diamond Lake Rd., Minneapolis, MN 55419):



- February 12th, 2019 - 6PM - Planning a 1/2 Story (Attic) Remodel
- March 19th, 2019 - 6PM - Planning a Kitchen Remodel
- April 9th, 2019 - 6PM - Evaluating Your Home for Solar

Longfellow Location (4020 Minnehaha Ave., Minneapolis, MN 55406):



- April 6th, 2019 - 10AM - Creative Financing for Your Remodel
- April 27th, 2019 - 10AM - Minnesota Modern with Larry Millett
- May 18th, 2019 - 10AM - Evaluating Your Home for Solar

NOW HIRING!

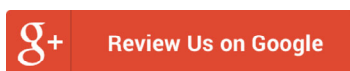
Business is booming! But... there just aren't enough skilled workers out there and we can't keep up with demand! So we've come to you for help.

Refer someone to us (whom we employ for at least 6 months) and **we'll give you \$1,000** in free remodeling. Expires: NEVER!



Our hiring standards are high, but if you know anyone qualified for a **Carpenter Apprentice, Lead Carpenter, Handyman or Drywall Installer** position, have them apply at <http://www.castlebri.com/workcastle/> and mention you referred them!

Have you worked with Castle before? Use the links below to leave us a review!



[Review NE MPLS Showroom](#) | [Review St. Paul Showroom](#) | [Review South MPLS Showroom](#) | [Review Longfellow Showroom](#)



Custom Design Showrooms



5 W. Diamond Lake Rd
Minneapolis, MN 55419
P) 612-789-8509



2600 Johnson St. NE
Minneapolis, MN 55418
P) 612-789-8509



362 Snelling Ave S.
St. Paul, MN 55105
P) 651-699-4164



4020 Minnehaha Ave
Minneapolis, MN 55406
P) 612-789-8509

Showroom maps & hours can be found on our website at www.CASTLEBRI.com

Copyright Â© 2018 Castle Building & Remodeling. All rights reserved.

You are receiving this email because you opted in to Castle Building & Remodeling's Newsletter.

Our mailing address is:

Castle Building & Remodeling
2710 E 33rd St
Minneapolis, MN 55406